

INVESTOR PRESENTATION

Q4 2018

February 26, 2019



Forward-looking Statements

Statements in this presentation that are not historical in nature, including those concerning the company's current expectations about its future results, are "forward-looking" statements as defined in Section 21E of the Securities Exchange Act of 1934, as amended, and the Private Securities Litigation Reform Act of 1995. Forward-looking statements are identified by words such as "may," "should," "expects," "provides," "anticipates," "assumes," "can," "will," "meets," "could," "likely," "intends," "might," "predicts," "seeks," "would," "believes," "estimates," "plans," "continues," guidance," or "outlook" or similar expressions. These forward-looking statements reflect the company's current expectations about future requirements and needs, results, levels of activity, performance, or achievements. Some of the factors that could cause actual results to differ materially from the forward-looking statements contained herein include, without limitation: failure to achieve expected utilization rates, billing rates and the number of revenue-generating professionals; inability to expand or adjust our service offerings in response to market demands; our dependence on renewal of client-based services; dependence on new business and retention of current clients and qualified personnel; failure to maintain third-party provider relationships and strategic alliances; inability to license technology to and from third parties; the impairment of goodwill; various factors related to income and other taxes; difficulties in successfully integrating the businesses we acquire and achieving expected benefits from such acquisitions; risks relating to privacy, information security, and related laws and standards; and a general downturn in market conditions. These forward-looking statements involve known and unknown risks, uncertainties, and other factors, including, among others, those described under "Item 1A. Risk Factors" in Huron's Annual Report on Form 10-K for the year ended December 31, 2018, that may cause actual results, levels of activity, performance or achievements to be materially different from any anticipated results, levels of activity, performance, or achievements expressed or implied by these forward-looking statements. The company disclaims any obligation to update or revise any forward-looking statements as a result of new information or future events, or for any other reason. Guidance noted in this presentation is effective as of February 26, 2019. Nothing in this presentation should be construed as reaffirming, disaffirming or updating such guidance.

1

COMPANY OVERVIEW

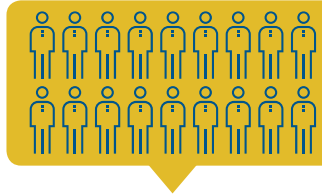
Trusted Advisor For Transformative Strategic Decisions And Execution



We are a global consultancy that helps our clients drive growth, enhance performance and sustain leadership in the markets they serve. We partner with them to develop strategies and implement solutions that enable the transformative change our clients need to own their future.

FORMED IN
2002

With approximately 200 professionals



More than 3,200 professionals with leading expertise



2018 revenue of \$795 million



Headquartered in Chicago with domestic and international offices

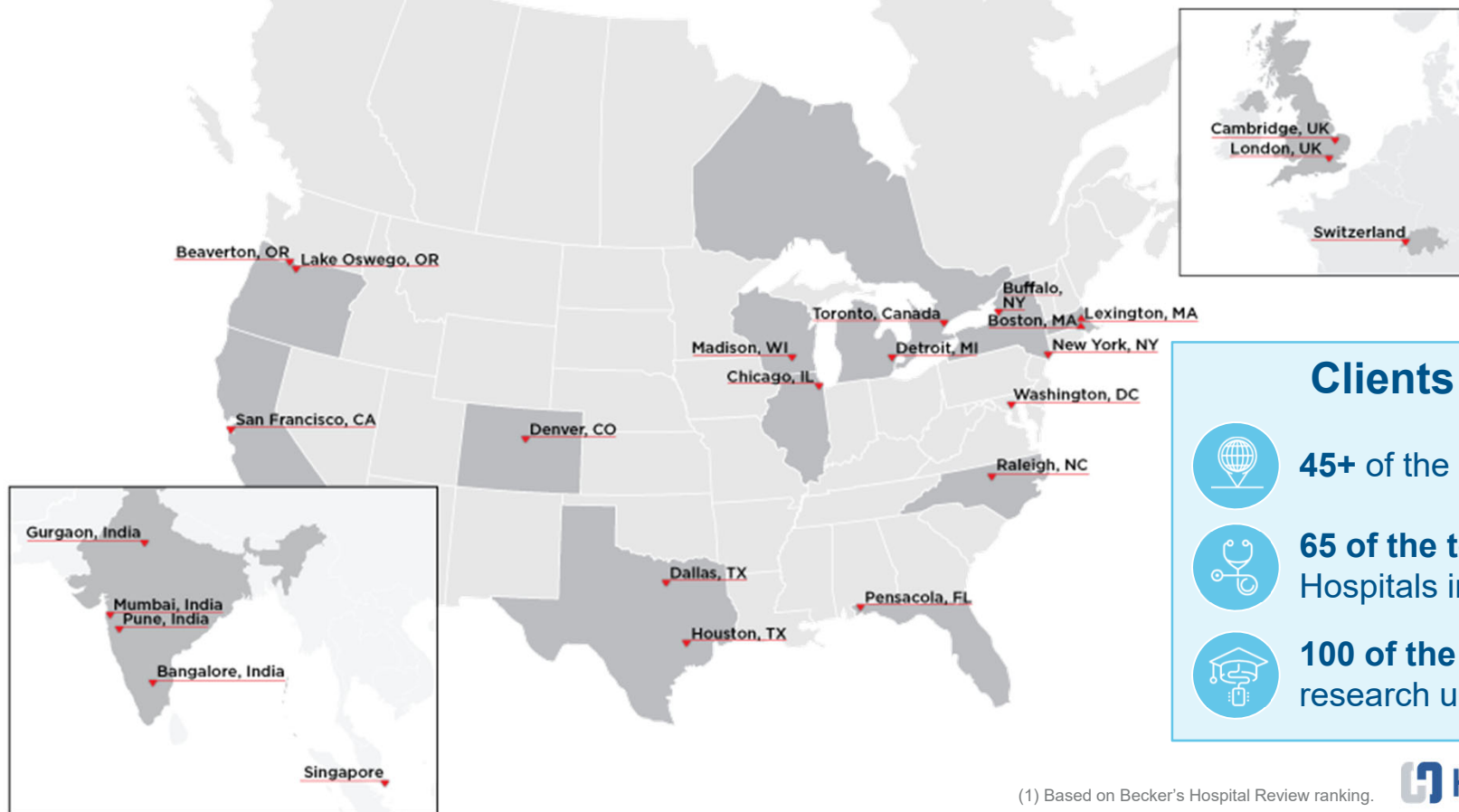


Publicly traded on the NASDAQ since October 2004



Huron served more than 1,200 businesses and institutions, including 250 new clients

Global Client Base And Footprint



Clients Served



45+ of the Fortune 100



65 of the top 100 Great Hospitals in America⁽¹⁾



100 of the top 100 research universities

(1) Based on Becker's Hospital Review ranking.

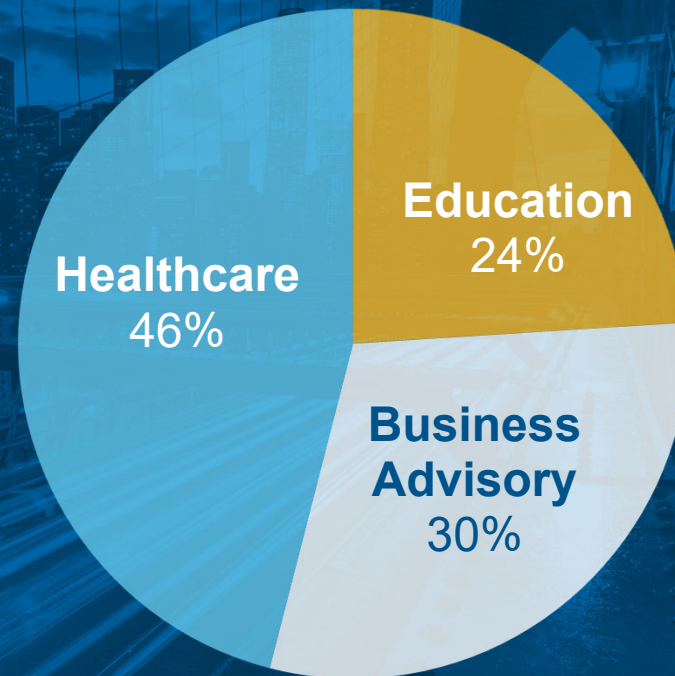


Partner With Clients To Strengthen Their Business Today And Create Future Growth For Tomorrow



**Focused
on serving
industries
facing
significant
disruption
and/or
regulatory
change...**

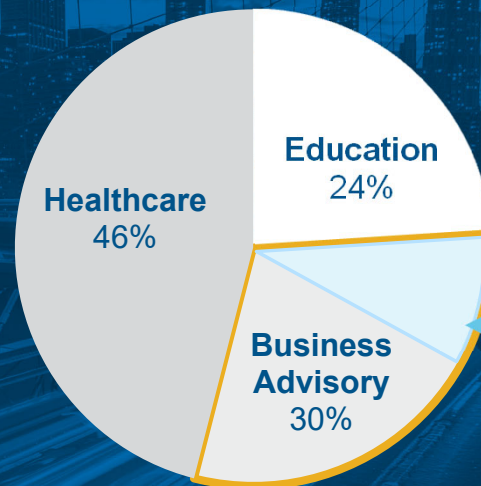
Operating Segment Mix



Segment percentages are based on full year 2018 revenue results.

...with a unified platform that drives strategic advantage through collaboration.

Operating Segment Mix



30%

of total full year 2018 Business Advisory segment revenue is generated in the healthcare and education industries

Segment percentages are based on full year 2018 revenue results.

Unlocking The Value Of The Platform To Achieve **Market Success**

HURON'S TOP 10 CLIENTS BY REVENUE FULL YEAR 2018	Client	Healthcare	Education	ES&A	Legacy Business Advisory	Strategy & Innovation	Life Sciences
	Client #1	●	●				
	Client #2	●	●				●
	Client #3	●	●	●			
	Client #4	●	●	●			
	Client #5	●	●	●			
	Client #6	●	●				
	Client #7	●			●		
	Client #8	●	●				
	Client #9		●	●			
	Client #10	●				●	

Strategic Priorities To Drive Shareholder Value



ACHIEVE SUSTAINABLE
ORGANIC GROWTH



DRIVE MARGIN
EXPANSION

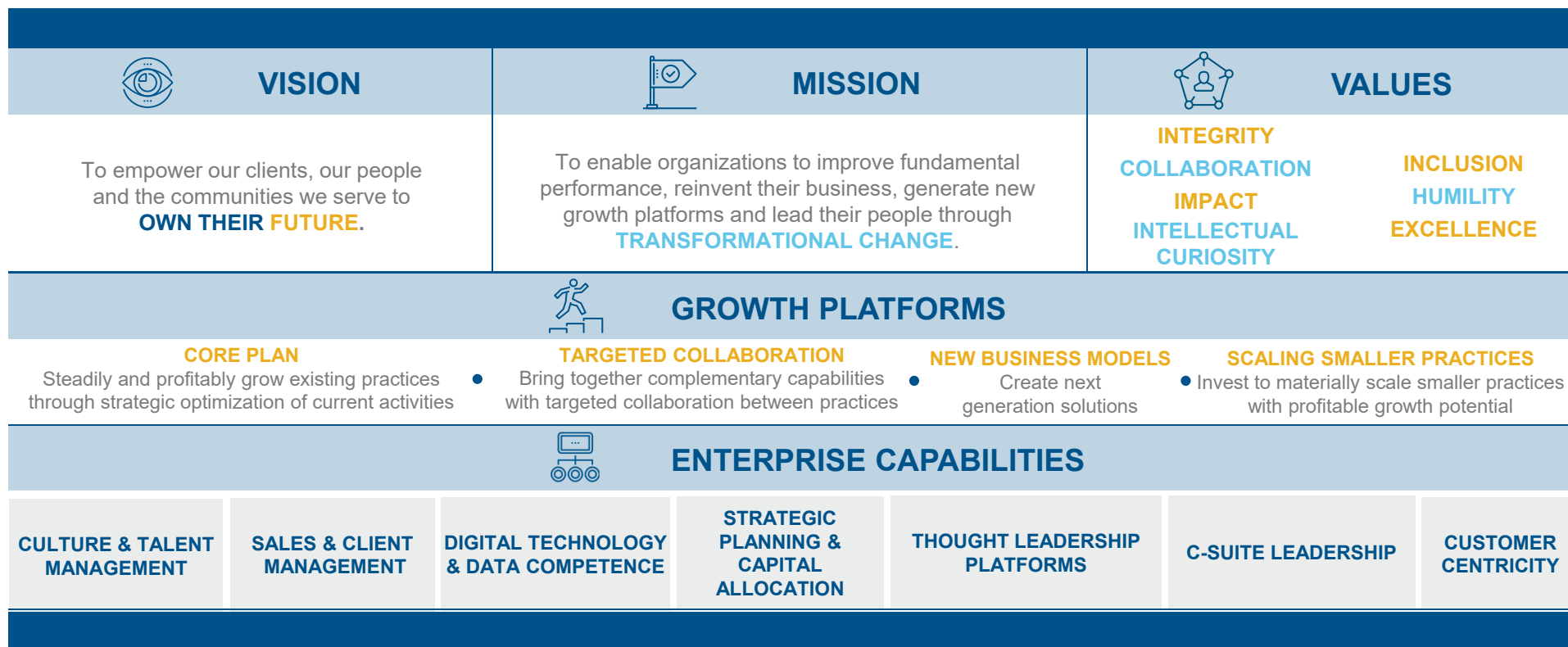


DEPLOY CAPITAL
STRATEGICALLY



INVEST IN OUR
PEOPLE

Huron's 2022 Strategic Framework





2

SERVICES OVERVIEW

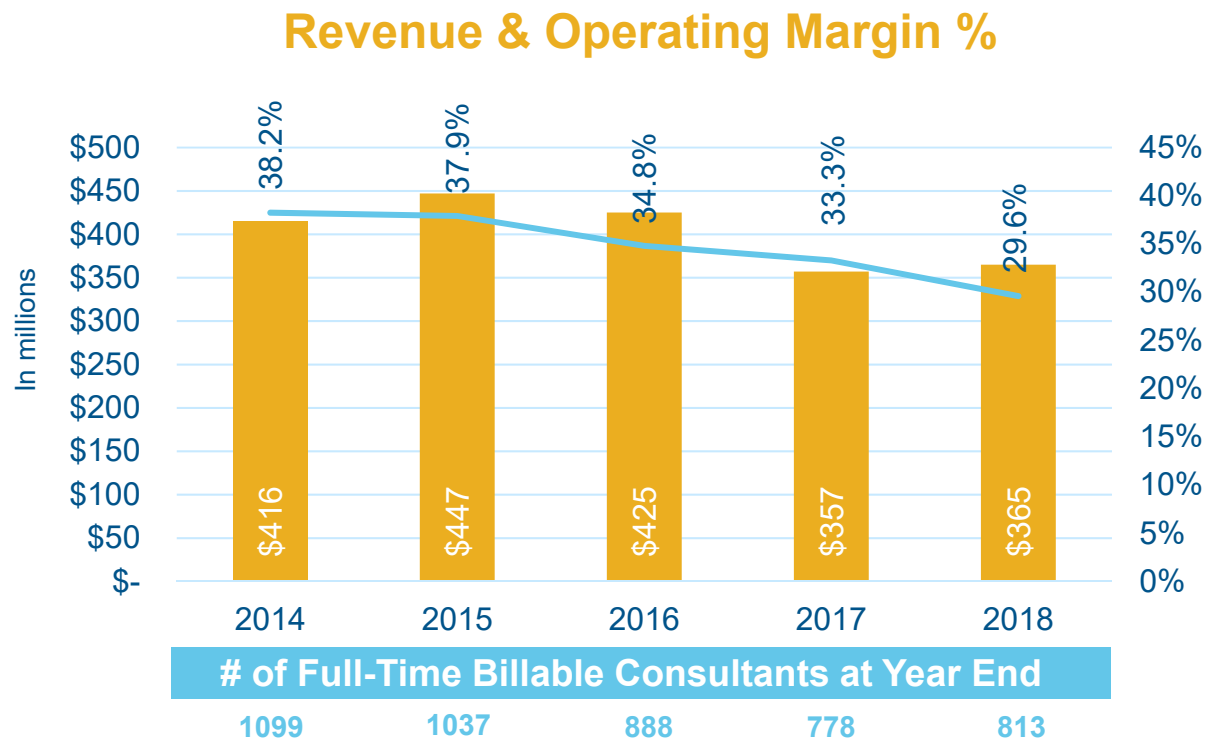
Healthcare Segment Overview

Health systems, hospitals and medical clinics are under immense pressure to improve clinical outcomes and reduce the cost of providing patient care. Investing in new partnerships, clinical services and technology is not enough to create meaningful and substantive change. To succeed long term, healthcare organizations must empower leaders, clinicians, employees, affiliates and communities to build cultures that foster innovation to achieve the best outcomes for patients. We help healthcare organizations build innovation capabilities and accelerate key growth initiatives, enabling organizations to own the future, instead of being disrupted by it.

AT A GLANCE

- Served more than 450 health systems, hospitals and physician organizations, including 65 of the top 100 Great Hospitals in America (Source: Becker's Hospital Review)
- Over 1,000 specialists and experienced consultants dedicated to the healthcare industry including a leadership team that brings more than 25 years of healthcare and consulting experience
- Fully integrated implementation approach resulting in 3% to 6% revenue benefit and 5% to 10% operating expense benefit annually with a potential improvement rate of 2-9%

Healthcare



Clients We Serve

- Integrated Health Systems
- Academic Medical Centers
- Children's Hospitals
- Community Hospitals
- Public Hospitals
- Government Health Systems
- Physician Groups

Market Trends



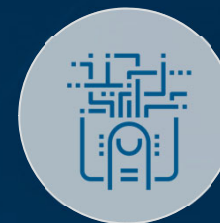
INNOVATION

Organization leaders are interested in forward-looking strategies, today's investments continue to focus on current state.



REVENUE ENHANCEMENT & COST CONTAINMENT

Forty-six percent of leaders are exploring new and alternative ways of generating revenue.



TECHNOLOGY INVESTMENT

Trends indicate healthcare organizations are investing in ways of activating valuable data from their technology investments.



CONSUMER EXPECTATIONS

Changing consumer expectations around technology and transparency will impact the labor considerations healthcare organizations will need to make in the next 3-5 years.



LEADERSHIP, TALENT & CULTURE

Nearly half of healthcare organizations are considering or turning to short-term staffing contracts to fill clinical and non-clinical roles.



ALTERNATIVES TO TRADITIONAL M&A

75 percent of healthcare leaders agree industry collaboration is vital to their organizations' longevity.

Source: Huron commissioned a blind, online survey of 301 healthcare executives conducted from May to June 2018. The survey results are statistically significant with a confidence level of 95 percent and a margin of error of +/-5.5 percent or less.

Healthcare Expertise



Care Transformation

- Improved transitions of care
- Improved quality outcomes
- Increased patient satisfaction
- Increased clinical efficiency



Financial and Operational Excellence

- Increased cash flow
- Resources leveraged more effectively
- Increased revenue by 3% to 6% annually
- Decreased operating expenses by 5% to 10% annually



Technology and Analytics

- Activated technology to create a competitive advantage
- Maximized return on current investment



Leadership Excellence

- Accountable leaders
- Improved employee satisfaction and engagement

Business Advisory Segment Overview

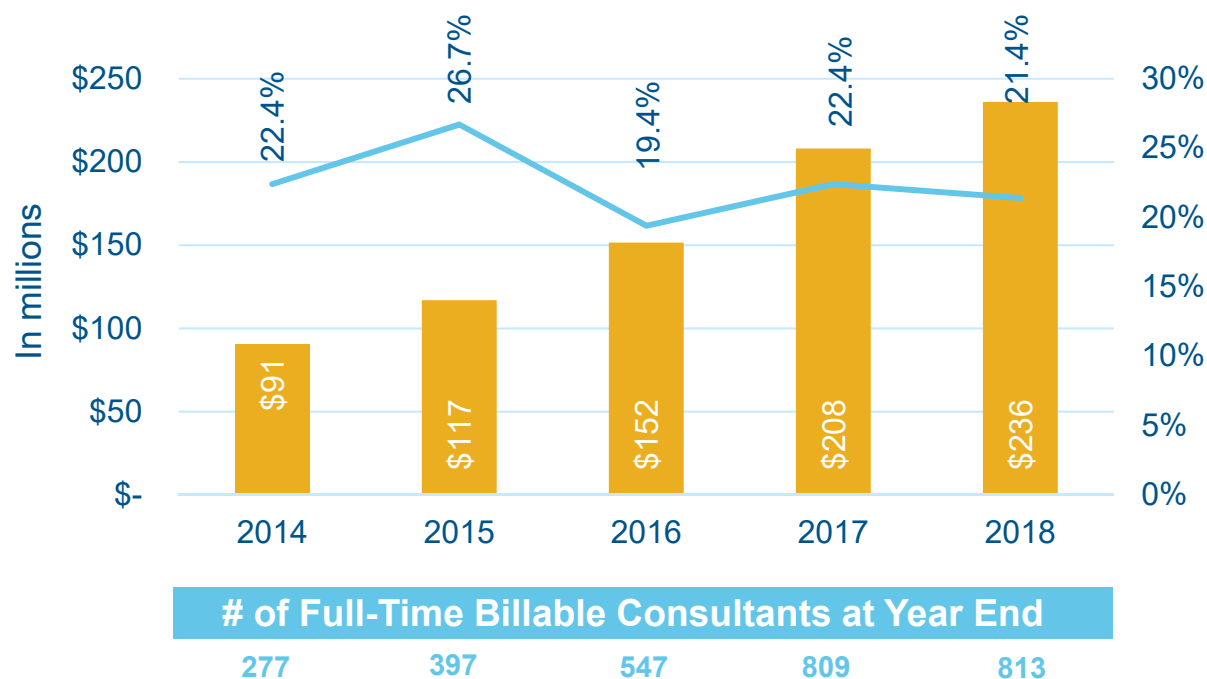
Across industries worldwide, increasingly complex challenges are making it difficult for businesses to grow revenues and increase value. Success depends on the relationships companies have with their customers and their ability to make insightful decisions that deliver value. Our experience across a range of commercial sectors enables us to truly understand the complexities of the competitive landscape, stakeholder needs and statutory regulations. We work in partnership with our clients and their stakeholders to evaluate and implement solutions that address the challenges they face and help move their businesses forward.

AT A GLANCE

- 2018 Best Innovation Strategy Consulting, *ALM Intelligence*
- 2016 Turnaround Award Winner, *The M&A Advisor*
- Oracle Platinum Partner, Implementation
- Salesforce Silver Partner
- 2016 Turnaround Consulting Firm of the Year (Middle Market), *Turnaround Atlas Award*

Business Advisory

Revenue & Operating Margin %



Industries We Serve

Healthcare, Higher Education, Financial Services,
Life Sciences, Energy, Retail, Technology,
Media, Telecommunication and more

Clients We Serve

Fortune 500 and Middle Market
Corporations

Pharmaceutical, Biotech & Medical
Device Companies

Hospitals & Health Systems

Colleges & Universities

Law Firms

Commercial and Investment Banks

Lenders & Private Equity Firms

Market Trends



SHRINKING CORPORATE LIFESPANS

50% of S&P 500 companies won't be on the index in 10 years (source: Innosight)



TECHNOLOGY INVESTMENT

By 2022, 50% of all legacy spend analysis software will be retired; replaced by artificial intelligence (AI)-powered, cloud-based solutions. (source: Gartner)



CONSUMERISM

69% of US economy is driven by consumer spending (source: The Bureau of Economic Analysis)



MERGERS AND ACQUISITIONS

\$1.26 trillion in M&A activity in 2017 (source: Market Watch)

Enterprise Solutions & Analytics Expertise



Advisory Services

- Custom solutions to create a competitive advantage
- Maximized return on current investment



Customer Relationship Management (CRM)

- Increased revenues and productivity
- Increased consumer engagement
- Increased productivity
- Resources leveraged more effectively



Enterprise Resource Planning (ERP)

- Streamlined processes
- Increased productivity
- Increased transparency



Performance Management

- Increased cash flow
- Resources leveraged more effectively
- Increased revenues
- Decreased operating expenses



Analytics and Reporting

- Maximized return on current investment
- Proactive decision making
- Increased transparency



Managed Services

- Improved service
- Resources leveraged more effectively

Legacy Business Advisory **Expertise**



Capital Advisory

- Strengthened competitive advantage through strategy-driven M&A
- Increased financial flexibility through financial transactions



Commercial Dispute Advisory

- Achieve most favorable outcomes
- Reduce complexity in case management



Operational Improvement

- Increased cash flow
- Resources leveraged more effectively
- Increased revenues
- Decreased operating expenses



Restructuring & Turnaround

- Increased cash flow
- Stabilized financial performance
- Improved operational efficiency



Transaction Advisory Services

- Mitigated risk during M&A
- Increased financial and operational understanding of strategic assets



Valuation

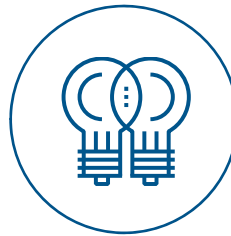
- Third-party assessed asset valuation
- Improved financial reporting and tax planning

Strategy & Innovation Expertise



Create Growth Strategies

- Achieve growth ambitions in fast-moving and unpredictable environments



Build Innovation Capabilities

- Develop the internal capabilities required to make innovation repeatable and sustainable



Accelerate New Growth Initiatives

- Quickly identify, seize, and scale high-potential opportunities for growth

Life Sciences Expertise



Strategy and Innovation

- Clear plan for the future and how to position your organization, business unit and R&D portfolio
- Optimization of assets and core services



Asset Commercialization

- Optimization of clinical strategy
- Defined go-to-market strategy to position product launch for success
- Stronger revenue forecasting



Pricing and Market Access

- Well-articulated product value proposition and messaging
- Defined evidence plan to demonstrate value to payers
- Improved payer engagement



Provider Engagement

- Increased provider engagement to combat declining access and limited field resources



Technology and Analytics

- Activated technology to create a competitive advantage
- Maximized return on current investment
- Increased consumer engagement

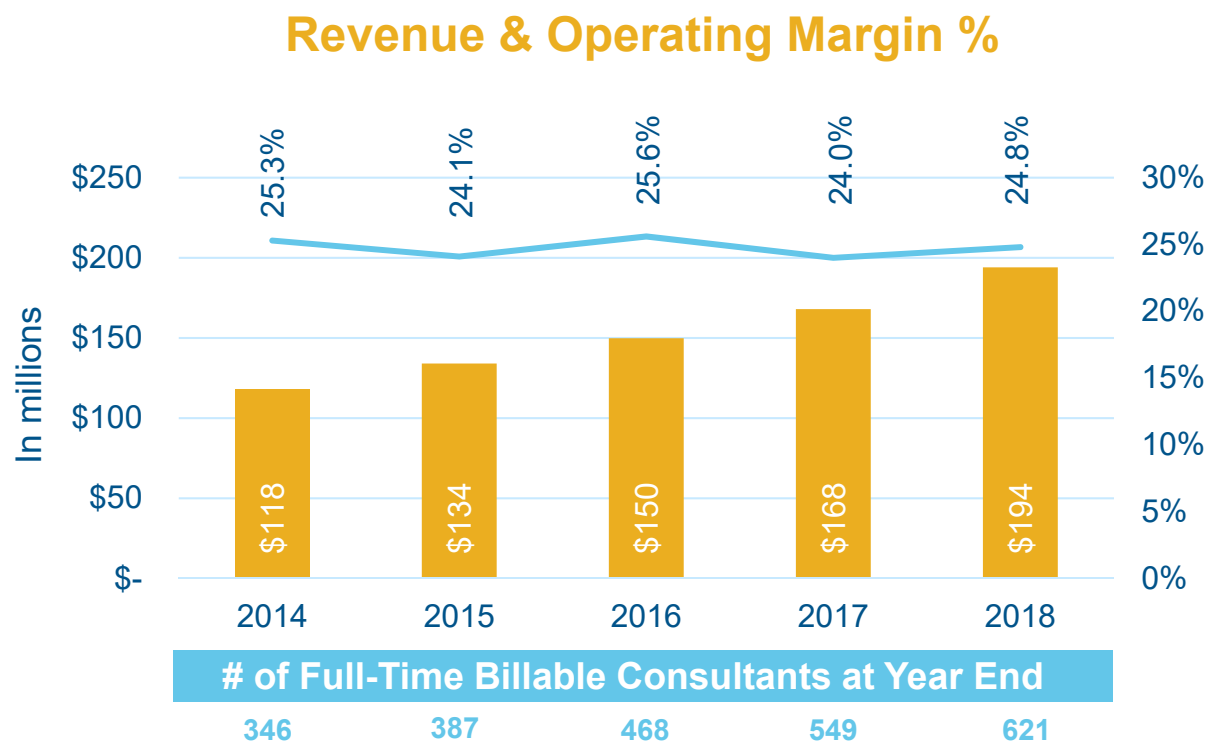
Education Segment Overview

Higher education institutions, academic medical centers and research organizations face mounting pressures from increased public scrutiny, evolving student demographics and declining enrollments and public funding. At the same time, these organizations are trying to improve outcomes and reduce costs in a dynamic, disruptive environment. To thrive long term, institutions must design the path forward with an intentional approach and innovative thinking, whereby stakeholders across the entire institution rally around a shared vision and embrace the hard work of effecting change. We help organizations tackle today's challenges while accelerating growth initiatives, enabling them to own their future, instead of being disrupted by it.

AT A GLANCE

- Worked with more than 500 institutions, including all top 100 research universities
- Conducted over 7,000 successful engagements
- Professionals have been dedicated to providing professional services and solutions for the industry for more than 25 years

Education



Clients We Serve

- Colleges
- Universities
- Academic Medical Centers
- Children's Hospitals
- Research Institutions

Market Trends

\$1.3T

Student debt is \$1.3 trillion and rising, driven by increasing education costs
(source: Forbes)



Tuition discount rates were at an all-time high (**44.2%** for all undergraduates), extending the **GAP** between sticker prices and what most students actually pay
(source: National Association of College and University Business Officers)

47%

Only 47% of public university chief executives agree that their "institution will be financially stable over the next 10 years"
(source: Inside Higher Ed)



A student who graduates on time can **SAVE \$20,000** on college costs
(source: College Board)

\$0.53

Average additional amount medical schools **INVESTED** for each dollar of sponsored research money received
(source: Association of American Medical Colleges)



Cloud spend in **HIGHER EDUCATION** is forecasted to grow from **\$509m** in 2017 to nearly **\$1.13bn** in 2021
(source: Ovum)

Education Expertise



Strategy and Innovation

- Clear plan for the future and how to position your organization
- Optimization of assets and core services

Student Success

- Improved retention, progression and graduation rates
- Improved quality outcomes
- Increased student satisfaction

Research Transformation

- Optimization of funding and research portfolio
- Improved research outcomes
- Resources leveraged more effectively

Financial and Operational Excellence

- Increased cash flow
- Resources leveraged more effectively
- Increased revenues
- Decreased operating expenses

Technology and Analytics

- Activated technology to create a competitive advantage
- Maximized return on current investment

Leadership Excellence

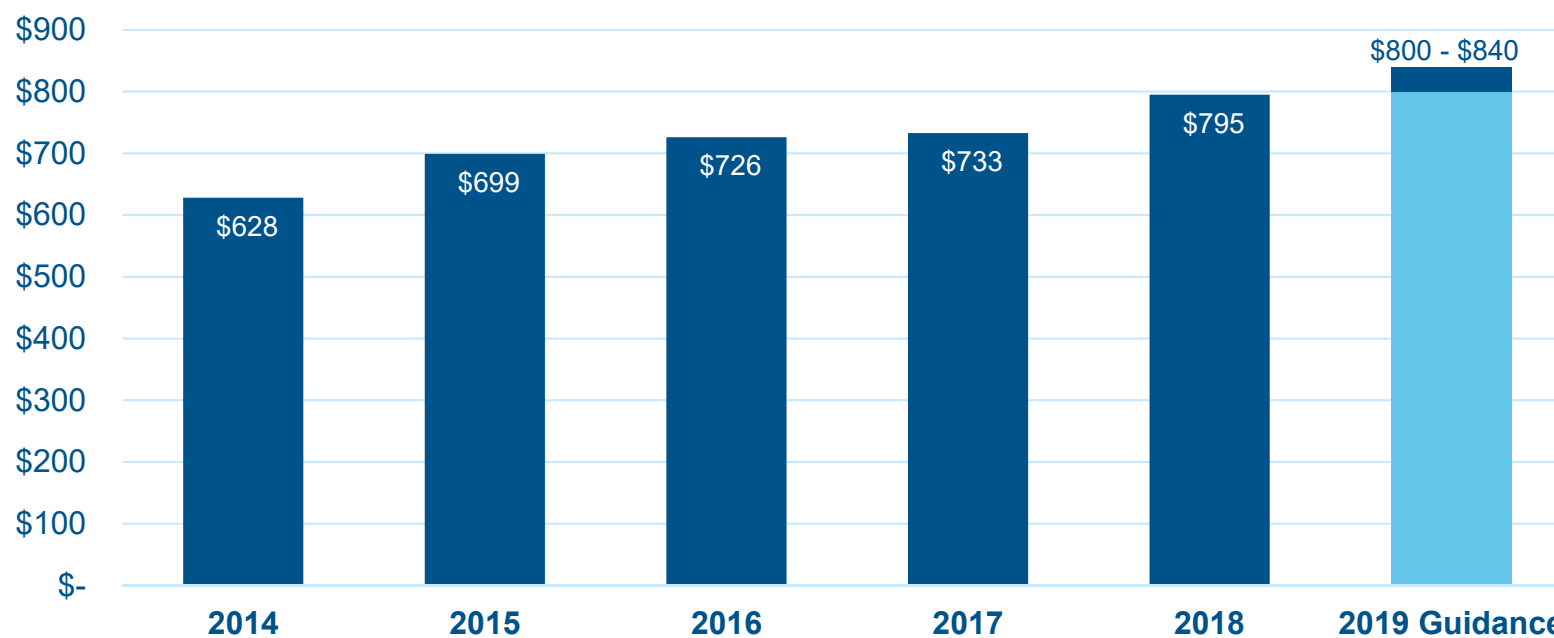
- Improved employee satisfaction and engagement

3

FINANCIAL OVERVIEW

Revenue trend

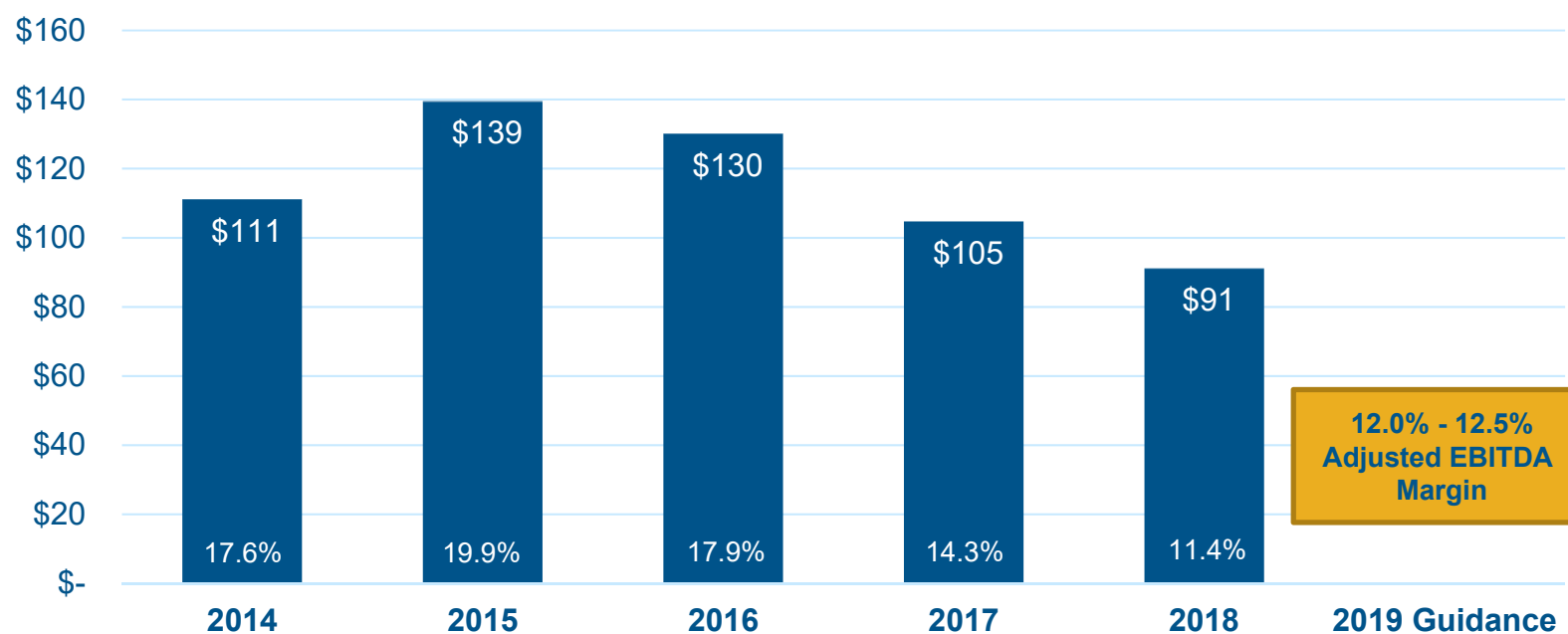
Revenues from Continuing Operations *(in millions)*



2019 Guidance noted in this presentation is effective as of February 26, 2019. Nothing herein should be construed as reaffirming, disaffirming or updating such guidance.

Adjusted EBITDA trend

Adjusted EBITDA (in millions) and Adjusted EBITDA Margins from Continuing Operations

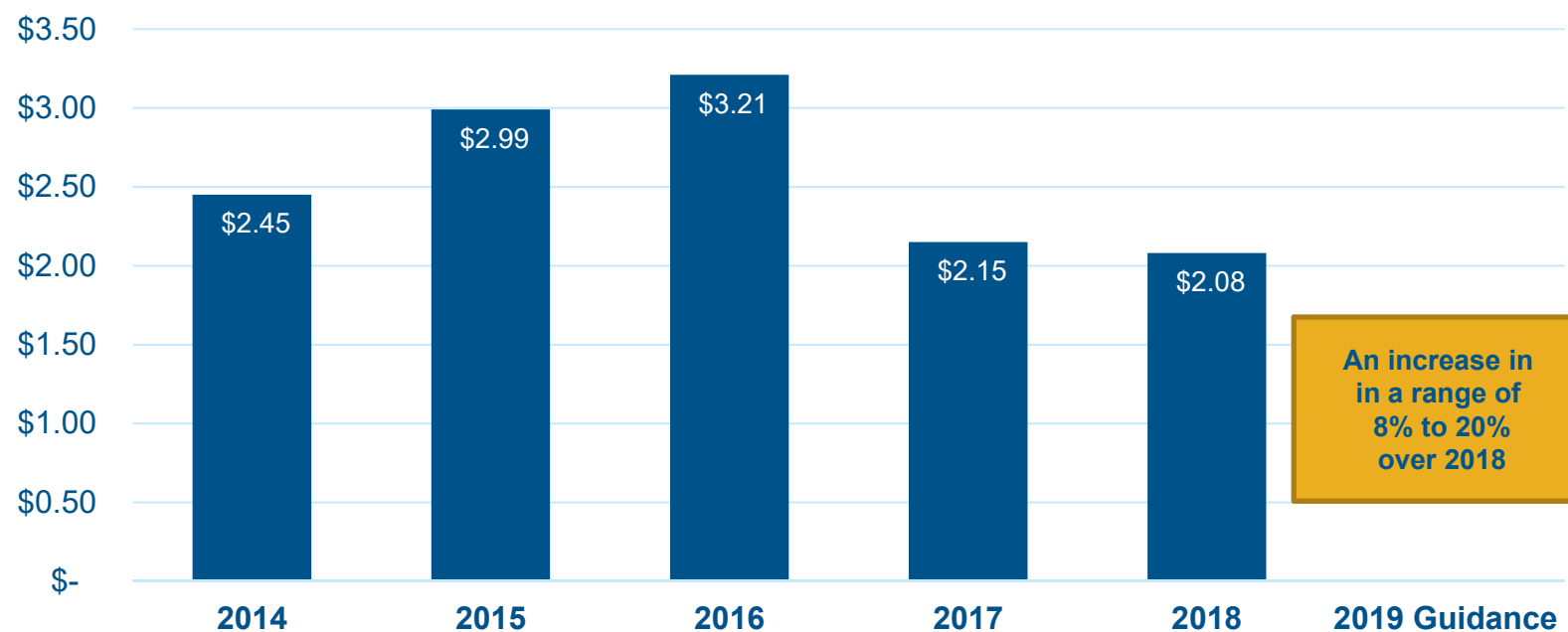


+ 2019 Guidance noted in this presentation is effective as of February 26, 2019. Nothing herein should be construed as reaffirming, disaffirming or updating such guidance.

+ See accompanying appendix for a reconciliation of Adjusted EBITDA, which is a non-GAAP measure, to the most comparable GAAP measure.

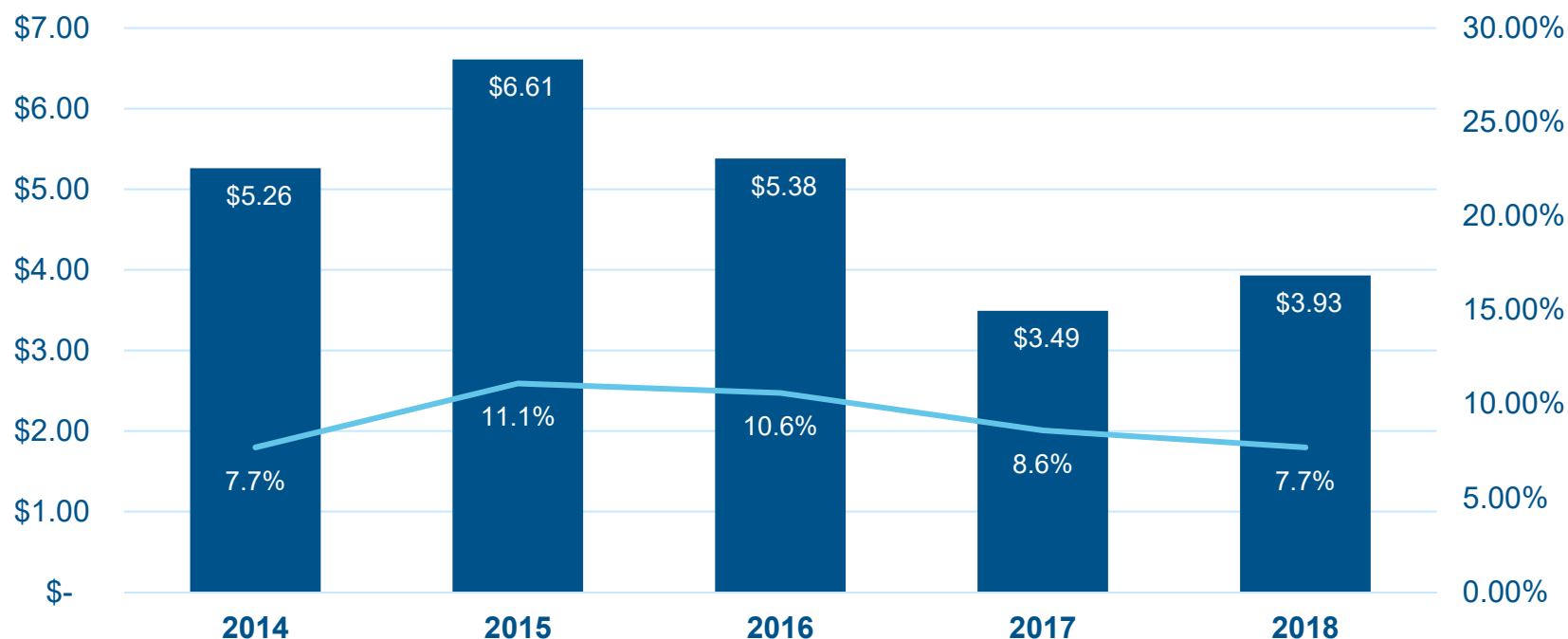
Adjusted EPS trend

Adjusted Diluted Earnings per Share from Continuing Operations



+ 2019 Guidance noted in this presentation is effective as of February 26, 2019. Nothing herein should be construed as reaffirming, disaffirming or updating such guidance.
+ See accompanying appendix for a reconciliation of Adjusted Diluted Earnings per Share, which is a non-GAAP measure, to the most comparable GAAP measure.

Free Cash Flow Per Share & Free Cash Flow Yield



Free cash flow is defined as cash from operations minus capital expenditures. Free cash flow yield is defined as free cash flow per diluted share divided by end of period stock price. See accompanying appendix for a reconciliation of free cash flow, which is a non-GAAP measure, to the most comparable GAAP measure.

Operating Metrics From Continuing Operations

	2014	2015	2016	2017	2018
Number of Full-Time Billable Consultants	1,738	1,821	1,903	2,136	2,247
Headcount Leverage ⁽¹⁾	15.6	15.0	14.7	15.3	15.5
Full-Time Billable Consultant Utilization Rate	75.4%	76.9%	74.6%	74.5%	77.5%
Average Full-Time Equivalents	112	229 ⁽²⁾	262	268	281
Revenue Per Day (in thousands)	\$ 2,648	\$ 2,963	\$3,070	\$3,112	\$3,349

(1) Headcount leverage is the number of non-MD full-time billable consultants divided by the number of MDs at the end of each period.

(2) Includes Studer Group, a business that was acquired in February 2015.

The background is a solid dark blue with a series of lighter blue, curved, motion-blurred lines that sweep across the frame from the bottom left towards the top right, creating a sense of speed and movement.

4

APPENDIX

Reconciliations Of Non-GAAP Measures To Comparable GAAP Measures

In evaluating the company's financial performance and outlook, management uses earnings (loss) before interest, taxes, depreciation and amortization ("EBITDA"), adjusted EBITDA, adjusted EBITDA as a percentage of revenues, adjusted net income from continuing operations, and adjusted diluted earnings per share from continuing operations, which are non-GAAP measures. Management uses these non-GAAP financial measures to gain an understanding of the company's comparative operating performance (when comparing such results with previous periods or forecasts). These non-GAAP financial measures are used by management in their financial and operating decision making because management believes they reflect the company's ongoing business in a manner that allows for meaningful period-to-period comparisons. Management also uses these non-GAAP financial measures when publicly providing the company's business outlook, for internal management purposes, and as a basis for evaluating potential acquisitions and dispositions. Management believes that these non-GAAP financial measures provide useful information to investors and others in understanding and evaluating Huron's current operating performance and future prospects in the same manner as management does, if they so choose, and in comparing in a consistent manner Huron's current financial results with Huron's past financial results. Investors should recognize that these non-GAAP measures might not be comparable to similarly titled measures of other companies. These measures should be considered in addition to, and not as a substitute for or superior to, any measure of performance, cash flows or liquidity prepared in accordance with accounting principles generally accepted in the United States.

Management has provided its outlook regarding adjusted EBITDA and non-GAAP adjusted diluted earnings per share, both of which are non-GAAP financial measures and exclude certain charges. Management has not reconciled these non-GAAP financial measures to the corresponding GAAP financial measures because guidance for the various reconciling items are not provided. Management is unable to provide guidance for these reconciling items because we cannot determine their probable significance, as certain items are outside of the company's control and cannot be reasonably predicted since these items could vary significantly from period to period. Accordingly, the reconciliations to the corresponding GAAP financial measures are not available without reasonable effort.

Reconciliations of non-GAAP measures

Reconciliation of net income (loss) from continuing operations to adjusted earnings before interest, taxes, depreciation and amortization (EBITDA) *(in millions)*

	2014	2015	2016	2017	2018
Revenues	\$ 628	\$ 699	\$ 726	\$ 733	\$ 795
Net income (loss) from continuing operations	\$ 47	\$ 62	\$ 40	\$ (170)	\$ 14
Add back:					
Income tax expense (benefit)	32	22	20	(52)	11
Interest expense, net of interest income	9	18	16	19	19
Depreciation and amortization	21	42	46	49	39
EBITDA	109	144	122	(154)	83
Add back:					
Restructuring charges	3	3	10	6	4
Litigation and other (gains) / losses, net	(1)	(9)	(2)	1	(2)
Goodwill impairment charges	-	-	-	253	-
Other nonoperating expense (income), net	-	-	-	(1)	6
Foreign currency transaction losses (gains), net	-	1	-	(0)	0
Adjusted EBITDA	\$ 111	\$ 139	\$ 130	\$ 105	\$ 91
Adjusted EBITDA %	17.6%	19.9%	17.9%	14.3%	11.4%

Reconciliations of non-GAAP measures

Reconciliation of net income (loss) from continuing operations to adjusted net income from continuing operations *(in millions, except earnings per share)*

	2014	2015	2016	2017	2018
Net income (loss) from continuing operations	\$ 47	\$ 62	\$ 40	\$ (171)	\$ 14
Weighted average shares – diluted	23	23	21	21	22
Diluted earnings (loss) per share (EPS) from continuing operations	\$ 2.05	\$ 2.74	\$ 1.84	\$ (7.95)	\$ 0.63
Add back:					
Restructuring charges	3	3	10	6	4
Litigation and other (gains) / losses, net	(1)	(9)	(2)	1	(2)
Amortization of intangible assets	9	28	33	35	24
Goodwill impairment charges	-	-	-	253	-
Non-cash interest on convertible notes	2	7	7	8	8
Loss (gain) on sale of businesses	-	-	-	(1)	-
Other nonoperating expense (income), net	-	-	-	(0)	6
Tax effect⁽¹⁾	(5)	(12)	(19)	(83)	(8)
Total adjustments, net of tax	8	1	29	220	32
Net tax benefit related to "check-the-box" election	1	(12)	-	(3)	-
Adjusted net income from continuing operations	\$ 56	\$ 67	\$ 69	\$ 47	\$ 46
Weighted average shares - diluted	23	23	21	22	22
Adjusted diluted EPS from continuing operations	\$ 2.45	\$ 2.99	\$ 3.21	\$ 2.15	\$ 2.08

(1) In 2017 and 2018, tax effect includes \$9 million and \$2 million, respectively, of tax expense related to the enactment of the Tax Cuts and Jobs Act of 2017.

Reconciliations of non-GAAP measures

Reconciliation of cash from operating activities to free cash flow *(in millions)*

	2014	2015	2016	2017	2018
Cash from operating activities	\$ 147	\$ 168	\$ 129	\$ 100	\$ 102
Less: Capital expenditures	(26)	(19)	(14)	(25)	(15)
Free cash flow	\$ 121	\$ 149	\$ 115	\$ 75	\$ 87
Weighted average shares - diluted	23	23	21	22	22
Free cash flow per share	\$ 5.26	\$ 6.61	\$ 5.38	\$ 3.49	\$ 3.93
End of period stock price	\$ 68.39	\$ 59.40	\$ 50.65	\$ 40.45	\$ 51.31
Free cash flow yield	7.7%	11.1%	10.6%	8.6%	7.7%

Our Leadership



Jim Roth

Chief Executive Officer



Mark Hussey

President &
Chief Operating Officer



John Kelly

Chief Financial Officer
& Treasurer



Diane Ratekin

General Counsel &
Corporate Secretary